

The background is a vibrant blue digital landscape. At the top, a portion of a globe is visible. Below it, a large, dark silhouette of a hand is shown reaching out, as if interacting with a digital interface. The foreground is filled with a grid of glowing blue squares, some of which contain binary code (0s and 1s). The overall aesthetic is futuristic and data-driven.

HISOURStory

ACCESSING OUR STORIES TO
CHANGE THE WAY WE RESEARCH
“PERIOD” STYLES

Mission

- To promote **inclusive** research practices that connect creators with contributors by developing and promoting tools and methods that support efforts to expand relevance in design and storytelling.



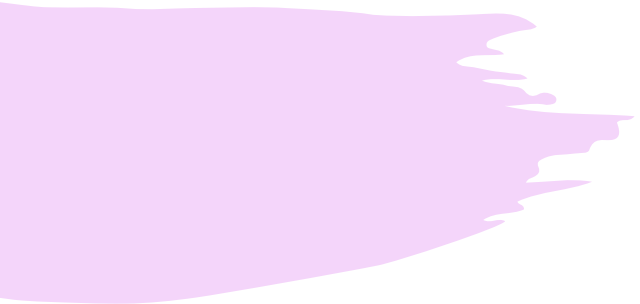
Is there a
problem?

As Educators?
As Creators?

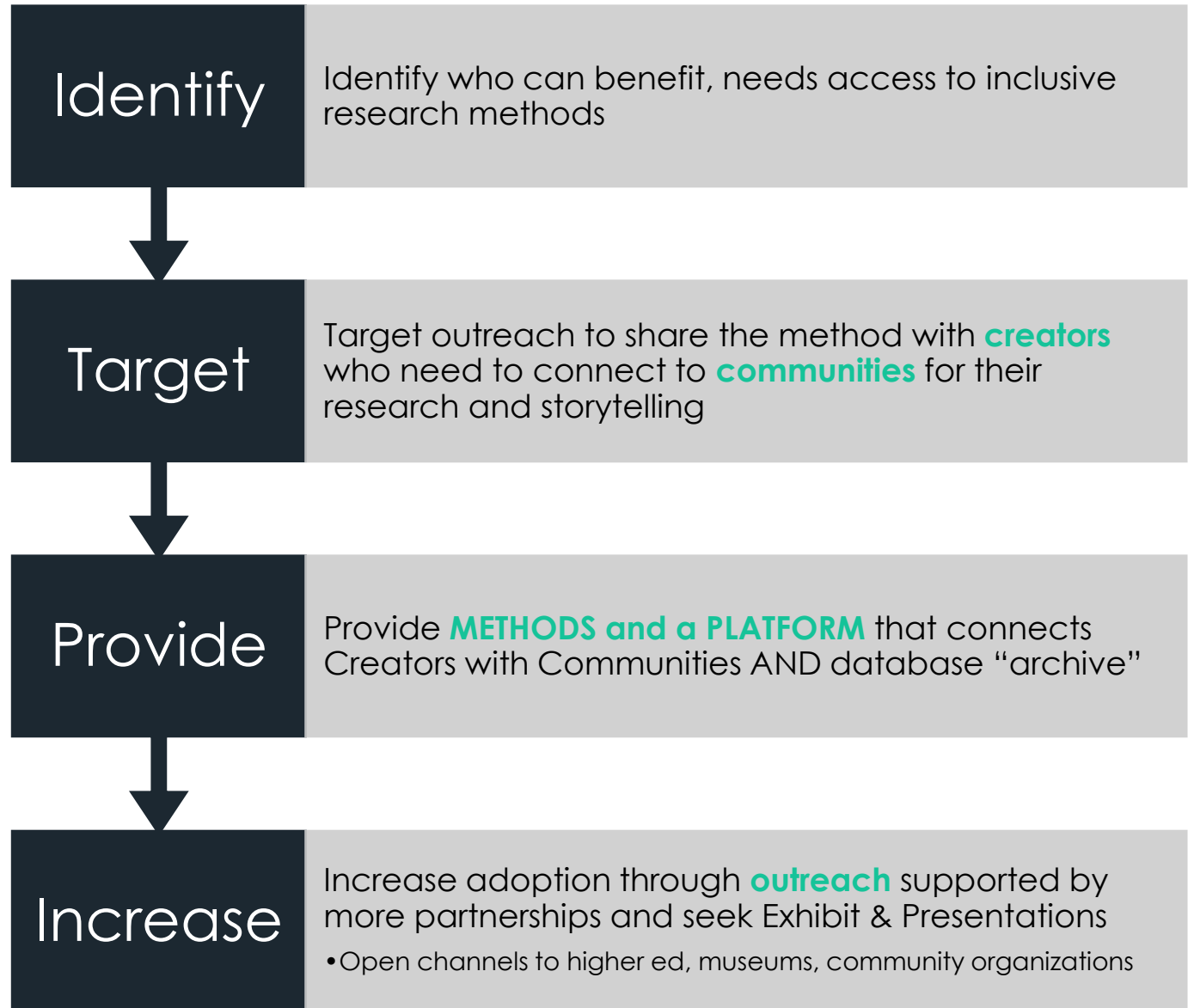
- History – whose is documented?
 - Pitfalls of Bias, Relevance, Stereotypes
- Do we have tools to research
 - Inclusively?
 - Accessibly?
- Source Challenges
 - Access
 - Tracking
 - Acknowledgment
 - The greater story
- Example – what's missing here...
<https://www.weteachdrama.com/post/four-professional-research-tools-for-theatre-design>

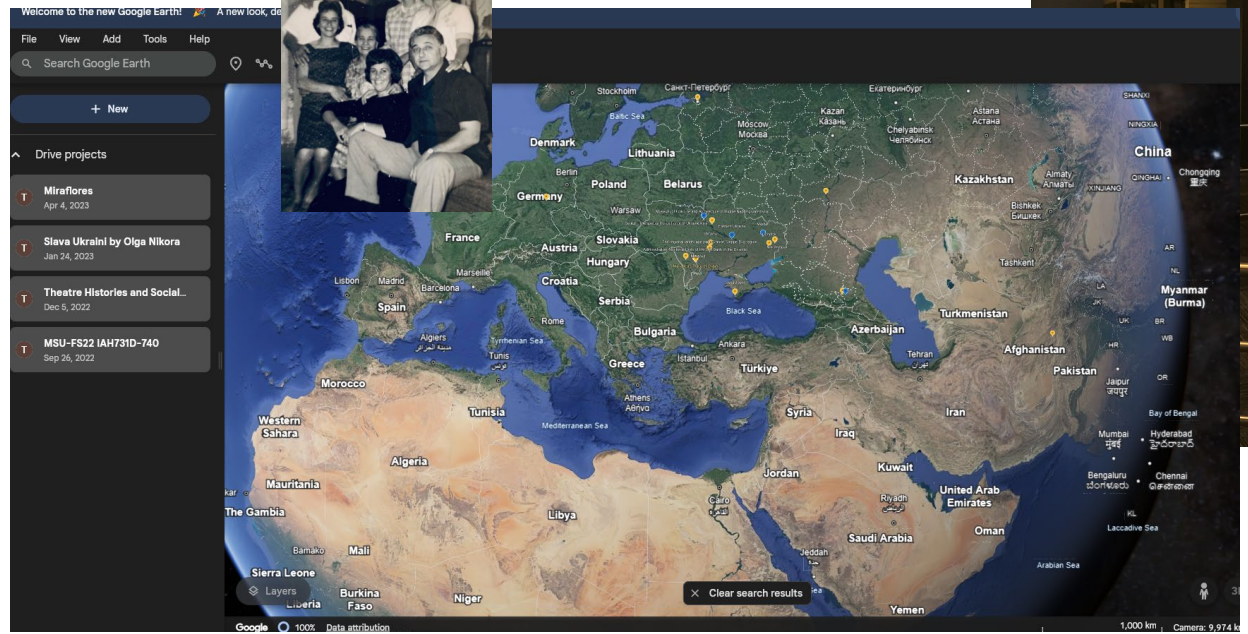
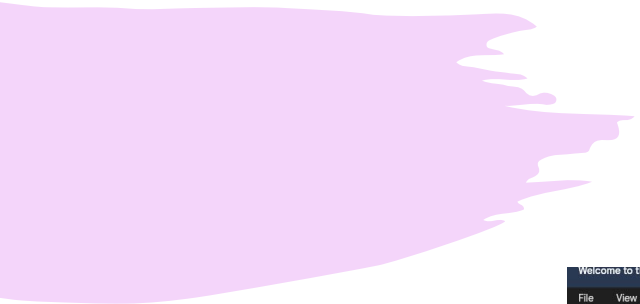
Why Share Stories?

- <https://clioarts.com/EDTE/>
- <https://x.com/ObamaFoundation/status/1064643886029537280?s=20>



Yes, there's
a problem.
Now what?



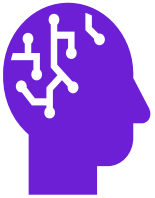


OURStory

Method
Platform
Network
Exhibit

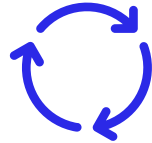
- Inclusive Research – the creator to contributors
- Building Community
- Deeper meaning
- Expanding access

Project Budget



**Estimated startup and development costs:
\$6,000**

*Platform Development
Database Development
AI Integration*



**Annual Maintenance
\$6,000**

Ongoing development of interactive platform, database, and outreach



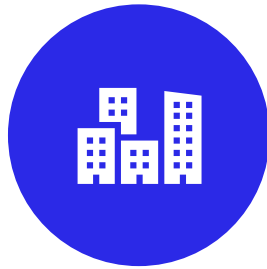
**Exhibit Development
\$4,000-\$7,000**

*Applied Platform to Display opportunities
Interactive installations
Development of exhibition materials from case studies*

Partnerships Sought



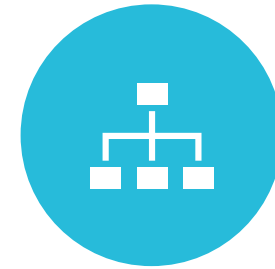
SCHOLARSHIP:
ASSOCIATION FOR THEATRE IN
HIGHER EDUCATION



METHODOLOGY &
DEVELOPMENT PARTNER:
URBAN INSTITUTE



EXHIBITION DEVELOPMENT:
MSU MUSEUM



INDUSTRY ORGANIZATION:
USITT
ATHE